

A message from our Head of School Sam



It has been a busy term with lots of fun activities happening across all the Primary sites. Everyone has enjoyed the English focus on letters and there have been mini post offices popping up around the school.

As the weather has started to improve, it has provided more opportunities for time outside and visits within the local area.

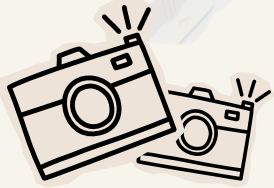
World Book Day provided an opportunity to dress up and enjoy our favourite stories with staff sharing some of their favourite stories.

Thank you to all the parents who joined our events this term – it was lovely to see so many of you. Wishing everyone a very happy Easter break. We look forward to seeing you all when we return on 13th April.

The re-vamped soft play room has proven to be a great success and pupils have enjoyed being able to access the updated facilities.

Sam





A week in photos



Meet the Catering Team



Following on from our December newsletter we wanted to introduce our catering team, who transferred over to us at Dorothy Goodman School from our previous provider. Diane and Grace work at our secondary site and Sue and Emma at our primary site and are well known to our young people. Paul, who is head Chef at Forest Way School (part of our trust) now oversees this provision and the role out of the new menu has already received positive feedback across the two sites. Please see below menu, which has already been shared via Arbor to parents.

Week 1 Menu

2026:
 Week 1 – 23rd Feb, 9th March, 23rd March, 20th April, 4th May, 18th May, 8th June, 22nd June, 6th July
 Week 2 – 2nd March, 16th March, 13th April, 27th April, 11th May, 1st June, 15th June, 29th June

	Monday	Tuesday	Wednesday	Thursday	Friday
Option 1	Margarita Pizza Slice (V) (GF)	Tuna Pasta Bake	Roast Chicken and Stuffing	Beef Burger served in a Bun	Fish Cakes with a Lemon Wedge
Option 2	Goan Quorn Curry (V)(GF)	Broccoli Cheese Bake (V)	Crispy topped Vegetarian Pie (V)	Veggie Hot Dog with Onions (V)	Green Cuisine vegetable Fingers (V)
Option 3	Jacket Potato With Cheese Or Beans	Jacket Potato With Cheese Or Beans	Jacket Potato With Cheese Or Beans	Jacket Potato With Cheese Or Beans	Jacket Potato With Cheese Or Beans Chips or Half Jacket Potato
CARBS	Buttered Potatoes with Rice and Peas	Home-Made Garlic Bread	Crispy Roast Potatoes and Yorkshire Pudding	Chunky Potato Wedges with American Slaw	
VEGETABLES	Seasonal Vegetables	Seasonal Vegetables	Seasonal Vegetables	Seasonal Vegetables	Baked Beans Garden Peas
SALAD BAR	Mixed Salad Selection				
BREADS	Assorted Breads				
FRUIT	Fresh Fruit Platter/Yoghurt				
DESSERTS	Butterscotch Whip (V) or Cocoa Beetroot Brownies (V)	Oaty Apple Crumble (V) or Shortbread Biscuit (V)	Banana Muffin (V) or Apple Flapjack (V)	Winter Berry Sponge (V) or Oaty Lemon Biscuit (V)	Ice Cream (V) or Fruit Jelly (V) (VG)



Week 2 Menu

2026:
 Week 1 – 23rd Feb, 9th March, 23rd March, 20th April, 4th May, 18th May, 8th June, 22nd June, 6th July
 Week 2 – 2nd March, 16th March, 13th April, 27th April, 11th May, 1st June, 15th June, 29th June

	Monday	Tuesday	Wednesday	Thursday	Friday
Option 1	Margarita Pizza Slice (V) Five Bean Chilli with Vegetable Rice (V)(VG)(GF)	Farm Assured Pork Sausages	Roast Pork served with Stuffing & Apple Sauce	Meatballs in Sweet Pepper Sauce with Pasta	Battered Fish with Lemon Wedge (GF)
Option 2	Jacket Potato With Cheese Or Beans	Vegan Sausages (V)(VG)	Cheese and Potato Pie (V)	Tortilla Layer Pie (V)	Quorn Dippers (V)(VG)
Option 3	Jacket Potato With Cheese Or Beans	Jacket Potato With Cheese Or Beans	Jacket Potato With Cheese Or Beans Crispy Roast Potatoes	Jacket Potato With Cheese Or Beans	Jacket Potato With Cheese Or Beans
CARBS	Vegetable Rice Paprika Potatoes	Creamy Mash Potato	Yorkshire Pudding	Cheesy Garlic Bread	Chips Or Half Jacket Potato
VEGETABLES	Seasonal Vegetables	Seasonal Vegetables	Seasonal Vegetables	Seasonal Vegetables	Baked Beans Garden Peas
SALAD BAR	Mixed Salad Selection				
BREADS	Assorted Breads				
FRUIT	Fresh Fruit Platter/Yoghurt				
DESSERTS	Apple & Banana Cake (V) or Rice Pudding with Peaches (V)(GF)	Carrot Cake Muffin (V) or Chocolate Orange Biscuit (V)	Peach & Raspberry Cobbler (V) or Viennese Whirl (V)	Pear Sponge (V) or Shortbread Biscuit (V)	Ice Cream (V)(GF) or Bread And Butter Pudding (V)



Key Dates and Information

Friday 27th March 2026	Last Day of Term
Monday 30th March - Friday 10th April 2026	School Closed for Easter Holidays
Monday 13th April 2026	School Re-Opens
Monday 4th May 2026	Bank Holiday Monday (School Closed)
Wednesday 6th - 8th May 2026	6th Form Duke of Edinburgh Practice Expedition
Friday 15th May 2026	Family and Friends Event Maths Focus 1:30pm till 3pm - Richmond
Friday 22nd May 2026	Last Day of Term
Monday 25th May- 29th May 2026	May Half Term
Wednesday 10th - 12th June 2026	6th Form Final Duke of Edinburgh Assessed Expedition
Wednesday 10th - 12th June 2026	Topstones Year 6 Residential
Saturday 20th June 2026	Summer Fayre 11am - 2pm

If you have concerns about your child's online behaviour or safety you can contact office@dorothygoodman.leics.sch.uk who will direct your email to one of our safeguarding leads;

Alternatively for confidential advice or to report serious concerns, use these professional resources:

- [NSPCC Helpline](#) (0800 800 5000): For adults worried about a child's safety or behaviour.
- [CEOP](#) (Child Exploitation and Online Protection): To report concerns about online grooming or sexual abuse.



Family Hubs
Leicestershire

Leicestershire County Council

There's a new website in town

The Family Hubs website has been designed to help families, young people, and communities throughout Leicestershire navigate information and advice.

Discover what support is available to you, find local events and news, and explore opportunities to volunteer in your community.

familyhubsleicestershire.org.uk

LEICESTER WHEELS FOR ALL
Because cycling is for everyone

FREE EASTER CYCLING EVENTS

Try our adaptative trikes! Events are suitable for anyone with disabilities their family & carers.

MAR 29	SAFFRON LANE ATHLETIC STADIUM, LE2 7NQ
MAR 30	LOUGHBOROUGH UNIVERSITY, SHIRLEY PEARCE SQUARE, LE11 3TU
APR 3	SAFFRON LANE ATHLETIC STADIUM, LE2 7NQ
APR 12	SAFFRON LANE ATHLETIC STADIUM, LE2 7NQ

All events running 10:30am til 12.30pm

WWW.LEICESTERWHEELSFORALL.ORG

DOROTHY GOODMAN SCHOOL

SUMMER FAYRE

SATURDAY

20TH JUNE 2026

11AM - 2PM

BARWELL LANE, HINCKLEY LE10 1SS

- RAFFLES • GAMES •
- ICE CREAM • STALLS •
- AND MORE •