

I hope you all had a lovely half term break. It has been a busy week at primary as we have begun to look at transition work ready for the new academic year. We are spending this half term celebrating our success this year and practising transitions. We have lots of exciting events coming up next week for Sports Week and some of our year 6s are off on their residential! Saturday 14th June is also our Summer Fayre at our secondary site and we hope to see lots of you there- we still have raffle tickets available too!

The highlight of my week this week has been playing football with Emre, Lyndon and Ellis during lunch. Their communication, teamwork, sportsmanship and resilience were incredible. They encouraged me when I wasn't playing at my best and congratulated me when I played better! We are so proud of the progress they have all made this year 😊

I also want to say a huge well done to Sophia and Becky who have completed their final teacher training observations! Well done both- we are so lucky to have you at Primary site!

Have a great weekend everyone,

Vicki



NEW **PRIMARY SCHOOL LUNCHES w/c 9th June 2025** **Week 3 Menu** **(£2.30 per day)**

WEEK 3	MAIN Roasted Mediterranean Vegetable Pasta Bake, with Garlic Bread & Sweetcorn	MAIN Chicken Burger in a Bun, Herby Diced Potatoes & Coleslaw	MAIN Lasagne with Garlic Bread & Salad	MAIN Italian Chicken with Herby Diced Potatoes & Mixed Vegetables	MAIN Chicken Nuggets with Chips & Spaghetti Hoops
	VEGETARIAN Vegan Sausage Roll with Potato Wedges & Sweetcorn (V)	VEGETARIAN Macaroni Cheese with Garlic Bread (V)	VEGETARIAN Quorn Hoisin Wrap with Potatoes & Mixed Vegetables (V)	VEGETARIAN Vegan Bolognese with Garlic Bread (V)	VEGETARIAN Quorn Nuggets with Chips & Spaghetti Hoops (V)
	DESSERT Strawberry Mousse	DESSERT Chocolate & Beetroot Cake with Custard	DESSERT Cherry Cheesecake	DESSERT Victoria Sponge with Custard	DESSERT Strawberry Ice Cream with Sauce

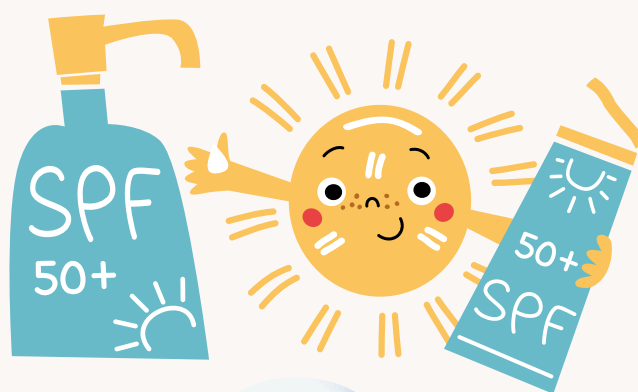
[Click here for Lunch Menus](#)

We have a no-debt procedure for our school meal service. If your child is not entitled to free school meals, they must be in credit if they wish to have a school dinner, you can pay via Arbor. Please keep us updated with any dietary requirements for your child. Information regarding eligibility for Free School Meals is available from your local authority.




Dates for your Diary

11 th June	KS2 Sports Day 1:30pm-2:30pm	(apart from those at Top Stones residential) Lower site
14th June	Summer Fayre	Secondary School
16th - 20 th June	Year 6 Residential	Sherwood Pines
24th June	New Teacher Parents Evening	Details to follow
11 th July	Last Day of School	



"Its that time of year again!
Can you please send in a sun cream for your child so that we can continue to enjoy the lovely warm weather. Please also put your child's name on the bottle. As per school guidelines, the sun cream can not be in an aerosol spray can or contain nut oil.

PMLD LINK  **Some of our staff and young people have been featured in the spring edition of the PMLD link newsletter, regarding Storysharing (pages 10-16). Click to view.**

Step 1 Visit myschoolfund.org to sign up for free and link to your child's school

Step 2 Register your credit/debit card to your account



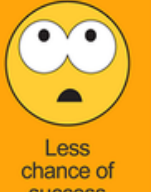
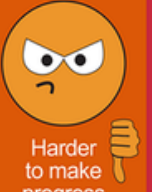

Step 3 Spend at participating retailers

Step 4 Start receiving your eGift Cards!

In association with







190 DAYS 100%  Very best chance of success	183 DAYS 96%  Off to a flying start	179 DAYS 94%  Less chance of success	175 DAYS 92%  Harder to make progress	More than 18 days absence less than 90%  Persistent Absentee (Not fair on your child)
--	--	--	---	---





Is my child too ill for school? - NHS (www.nhs.uk)

We regularly update your child's progress at school using the [Earwig](https://www.earwig.co.uk) website. 

Please do not send any products containing nuts, into school.

Thank you for helping to keep our young people safe.


6th Form LOROS
 Hospice Care for Leicester, Leicestershire & Rutland

Just Giving - [DGS 6th Form page](#)

DGS DOROTHY GOODMAN SCHOOL

SUMMER FAYRE
 14TH JUNE 2025 11AM - 2PM
 BARWELL LANE SITE LE10 1SS

RAFFLE TICKETS STILL AVAILABLE

Prizes to be won..

Tickets are £1 per ticket or £5 per book

- SOFT PLAY PASSES
- BOWLING VOUCHER
- £100 AMAZON VOUCHER
- TEAM SPORT GO KARTING VOUCHER
- LEICESTER RIDERS FAMILY TICKET
- HIRE BOAT FOR 8 PEOPLE AT ASHBY BOAT CO.
- SPA DAY FOR TWO AT BOSWORTH HALL HOTEL
- BELVIOUR CASTLE FAMILY TICKET
- STONEHURST FARM FAMILY TICKET
- RESTAURANT MEAL VOUCHERS
- THE NATIONAL SPACE CENTRE FAMILY TICKET

...and many more



You are welcome to join us at our SEND Parent Support Group Drop in

YOU ARE INVITED TO JOIN US TO MEET WITH OTHER PARENTS TO GAIN AND SHARE ADVICE AROUND CARING FOR CHILDREN WITH ADDITIONAL NEEDS ENJOY A DRINK AND BISCUIT IN A SAFE ENVIRONMENT, WHILST TALKING ABOUT ALL OF THE JOYS AND CHALLENGES YOU FACE EACH DAY

2024/2025 DATES		
10th Sept 24	8th Oct 24	10th Dec 24
8th Jan 25	11th Feb 25	11th Mar 25
8th April 25	13th May 25	11th June 25
8th July 25		
10.00AM - 11.30AM		

Barwell Children & Family Wellbeing Centre
Barwell C of E Academy
 High Street Barwell LE9 8DS

FOR FURTHER INFORMATION PLEASE CALL TEXT OR EMAIL
 AMY QUINE FAMILY HELP SEND FAMILY SUPPORT WORKER - 07706 289899

It has been a busy week back after the half term break, with the students in key stage 2 consolidating their knowledge of forces in science with lots of different experiments taking place, Mercury class were independently carrying out investigations on how far cars would travel on different surfaces, whilst Jupiter class were testing out their strengths pulling on resistance bands and a large class game of tug of war. The primary site has been busy preparing for sports week next week with lots of teamwork, running around and some sensory sherborne sessions which allowed our students to work together and build on their class relationships. This week Mercury, Star and Mars class went to the leisure centre and had a really enjoyable swim session. The students transitioned really well and showed lots of confidence in the water.

Key stage 2 has been thrilled with the story Rhyme Crime, with students taking part in finding and matching the rhyming words, engaging in sensory stories and performing the story themselves. Furthermore Star class have shown off their culinary skills this week by baking a rhubarb crumble which looked and smelt delicious!

In key stage 1 we have seen some excellent turn taking and playing, especially during PE with students working together to play catch and impromptu games of chase between peers. Llamas class have been excelling in their communication this week with lots of lovely examples on Earwig of the students showing a great understanding of their routines and perseverance with their communication skills.



Together we care, learn and succeed



RESPECT



NURTURE

INDEPENDENCE

DYING FOR A SWIM

NEVER SWIM IN AN UNSUPERVISED AREA
Even on hot days, just below the surface, water can be icy cold, with fatal effects on strength and stamina.



Is your child in reception at our school?

It's time to complete the Reception Digital Health Contact



Complete the online form to get support and advice around behaviour, toileting, development, eating habits and much more

bit.ly/receptionDHC2

Please complete before 06.06.25

Childline 0800 11 11

healing together

Nurturing Young People Impacted by Domestic Abuse

I think it has given her the language to express how she is feeling and almost permission to discuss things.

Since starting the group he has had fewer anger outbursts. He has got so much better at opening up and expressing his feelings.

For more information or to Enrol

Email: childrens.support@hincley-bosworth.gov.uk

National Domestic Violence Helpline 0808 2000 247

Hinckley BID

HINCKLEY TOWN CENTRE

YEAR OF FUN 2025

EVENTS GUIDE

Hinckley & Bosworth Borough Council

BERMUDA ADVENTURE

DISABILITY PLAY

• DISABILITY • INCLUSION • SPORTS

Limited numbers so BOOK NOW to secure your place.

<https://nbtplayscheme.classforkids.io/camp/80>

Scan the QR code above to book online.

INTRODUCTORY PRICE OFFER

£7.50 per child including 1 adult entry. Includes soft play, supervised activity games and a FREE cup of squash. (Extra adult entry charged at £1.75 each to be paid on arrival)

One Friday of each month, we are hosting sessions at Bermuda Adventure Soft Play World exclusively for children with disabilities and special needs.

All Fridays for 2025

11th April, 9th May, 13th June, 11th July, 12th September, 17th October, 14th November, 12th December from 6:30pm - 8:00pm

Bermuda Adventure Soft Play World, St David's Way, Nuneaton CV10 7SD

For more information email: guy.blissett@nbleisuretrust.org

www.nbleisuretrust.org

JOIN THE Super 1s

All disabilities welcome Ages 8-25

CHALLENGE YOURSELF
BE MORE ACTIVE
IMPROVE YOUR SKILLS
MAKE NEW FRIENDS

Free inclusive cricket sessions!

WHEN: Mondays 4.30pm - 5.30pm

WHERE: Dorothy Goodman Secondary School, Barwell Lane, Hinckley LE10 1SS

CONTACT: Ashleigh Passant Ashleigh@nbtleisuretrust.org

www.lordstaverners.org/super1s

LORD'S TAVERNERS

LEICESTERSHIRE COUNTY COUNCIL

Sign up here

360

SEND SESSIONS 2025

First Friday of every month 6:30pm-8:30pm

Exclusive SEND sessions for families and friends of children with special educational needs and disabilities

£10.95 per child Adults Free